

Watermarking for 3D CAD Drawings Based on Three Components

Ki-Ryong Kwon¹, Suk-Hwan Lee^{2,*}, Eung-Joo Lee³, and Seong-Geun Kwon⁴

¹Division of Electronic, Computer & Telecommunication Eng., Pukyong National Univ.
krkwon@pknu.ac.kr

²Dept. of Information Security, TongMyong University
skylee@tit.ac.kr

³Dept. of Information Communication Eng., TongMyong University
ejlee@tit.ac.kr

⁴Mobile Communication Division, SAMSUNG electronics co
seonggeunkwon@hanmail.net

Abstract. Currently there has been much interested in developing the watermarking for 3D graphic data of mesh model or NURBS. However, the watermarking technique based on 3D CAD drawing leaves something to be desired. This paper proposes a watermarking technique for 3D design drawing using the components of Line, 3DFACE and ARC based on vertex that prevent the infringement of copyright from unlawfulness reproductions and distribution. By experimental result, we confirmed the invisibility of embedded watermarks as well as the robustness in geometrical attacks and file conversion to DWG, DXF, DWT and DWS.

Keywords: 3D CAD Drawing, Watermarking.

1 Introduction

With the rapid increase of the multimedia information in information-communication technology, the intellectual property and copyright protection has been made at issue. Generally there are two technologies for the intellectual property and copyright protection; cryptography and watermarking. The cryptography technology cut off the access of the unauthorized person after the multimedia information is encrypted. However, it cannot prevent the unlawful action of an authorized person and cannot solve the problem that some copyright owners assert their ownerships for one content. To solve the problems of the cryptography, there have been much researched in watermarking technology, which is the end-step in information security and protects the copyright of owner by embedding the watermark into the multimedia information.

A lot of research has been carried out to protect the copyright protection of image, video, and audio [1],[2]. Recently, 3D polygonal models, such as VRML, MPEG-4, have become very popular leading the development of 3D watermarking algorithms to protect the copyright of 3D graphic models with the extending technique of the image watermarking. 3D polygonal model are usually represented by a mesh defined by

* Corresponding author.

the coordinates and connectivity of vertices in a 3D Cartesian coordinate system. Ohbuchi et al. presented the watermarking for 3D polygonal model through geometric and topological modification [3]. Mao et al. presented the watermarking for 3D geometric model through the triangle subdivision [4]. Beneden et al. also presented an algorithm that adds a watermark by modifying the normal distribution of the model geometry [5]. Kanai et al. presented the watermarking for 3D polygons using the multiresolution wavelet decomposition [6].

Many design drawings in the industrial filed have been designed by 3D CAD tools. However, because of the unlawful reproduction of the architectural drawings, the construction industry has been financially damaged. Many researches have not been carried out to protect the copyright of 3D CAD compared with 3D polygonal model. Unlike 3D polygonal model, 3D CAD drawings can be designed by the basic components; LINE, ARC, CIRCLE, and 3DFACE. 3DFACE is similar as polygon of 3D polygon model. We presented 2D CAD watermarking that the watermark is embedded into the position of vertex in two components, LINE and Arc [7]. This algorithm needs to know the original vertices for watermark extracting.

This paper proposed the watermarking for 3D CAD drawing based on 3D vector data, which is a public watermarking using Line, Arc, and 3DFACE components in 3D CAD drawing. The watermark is embedded into the length of Line component in the embedding primitives, the circular radius of Arc component, and the length ratio of two sides in 3DFACE component. Thus, according to the distribution of three components in 3D CAD drawing, the embedding component can be determined. The results of experiment verify that the proposed algorithm is imperceptible and robust against file format conversion, move, scaling, rotation, component cropping, and layer cropping.

2 The Proposed 3D CAD Watermarking

2.1 3D CAD Drawing

The basic system of 3D CAD drawings consists of HEADER, TABLE, BLOCK, ENTITY, EOF sections. The shape of drawings is designed with the basic component of Line, Arc, Circle, and 3DFACE based on vector data in ENTITY section as shown in Fig. 1. The structure of each component is explained clearly in the following sections. 3D CAD drawings can be attacked intentionally or non-intentionally by CAD tools. The general attacks in CAD tools are followed as;

- 1) File Format Conversion: CAD drawings are easily converted to the format in AutoCAD such as DXF, DWG, DWT, and DWS.
- 2) Geometrical attack: There are translation, scaling, rotation, and cropping.
- 3) Layer cutting: The drawings in AutoCAD are composed of several layers. Users are able to cut some layers illegally.

The watermark in CAD drawings must be robust against the above attacks.

2.2 Watermark Embedding

The proposed watermarking embeds the watermark into the components of Line, Arc, and 3DFACE respectively according to the structure of 3D CAD drawings, as shown in Fig. 2. Three components are obtained from ENTITY section of CAD data. The

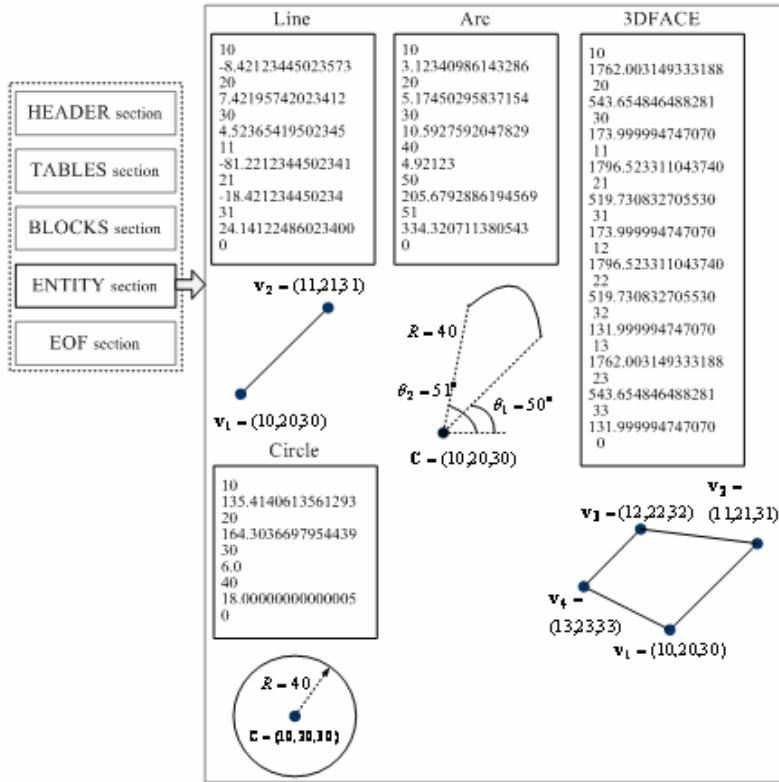


Fig. 1. The Structure of 3D CAD data

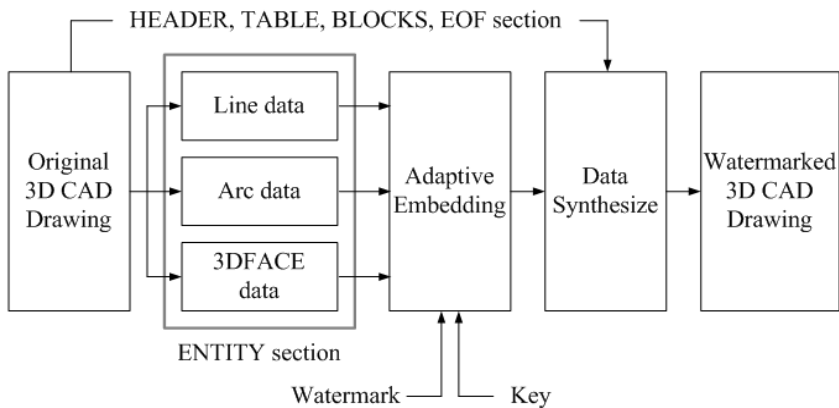


Fig. 2. Proposed 3D CAD watermark embedding system

embedding primitives are the length in Line, the radius of curvature in Arc, and the length ratio of two sides in 3DFACE. They are stored to extract the watermark as the key.

2.1.1 Line Component

A Line component consists of the start point $\mathbf{v}_s = (x_s, y_s, z_s)$ and the end point $\mathbf{v}_e = (x_e, y_e, z_e)$ as shown in Fig. 1. Each point may be connected to the neighborhood points. If a point is varied by the watermark, the neighborhood points will be varied together. The set of embedding primitive that consists of an arbitrary point and the neighborhood points connected to a point is gathered to embed the watermark. A bit of binary watermark is embedded into one point of a center line in an embedding primitive. Thus, a n th watermark bit w_n is embedded into the length

l_n of center line as follows; if $w_n = 1$, then $l_n \geq \bar{l}_n$. Otherwise, $l_n < \bar{l}_n$. \bar{l}_n is an average length of the connected Lines. To change the length of line according to the watermark, the coordinate of the point must be changed imperceptibly considering the neighborhood points. Fig. 3 (a) shows a center line $L_n = \{\mathbf{v}_1 \mathbf{v}_2\}$ and 3 neighborhood lines in an embedding primitive. \mathbf{v}_0 is connected to \mathbf{v}_1 and $\mathbf{v}_3, \mathbf{v}_4$ are connected to \mathbf{v}_2 . The search regions of $\mathbf{v}_1, \mathbf{v}_2$ which can be changed invisibly are determined respectively to be below the coordinate values of the connected points. Thus, the search region of $\mathbf{v} = (x, y, z)$ is $[\mathbf{v} - \Delta\mathbf{v}, \mathbf{v} + \Delta\mathbf{v}]$,

$$\Delta\mathbf{v} = 0.5 \times \min |t - \mathbf{v}'_k|_{\mathbf{v}_i \in C(\mathbf{v}), t \in \{x, y, z\}}$$

where $C(\mathbf{v})$ represents the points that are connected to \mathbf{v} . Two points $\mathbf{v}_1, \mathbf{v}_2$ are changed to $\mathbf{v}'_1 = \mathbf{v}_1 \pm \alpha$, $\mathbf{v}'_2 = \mathbf{v}_2 \pm \alpha$ alternatively within the search regions until satisfies the condition as follows;

$$\min_{\theta_{1k} \in \Theta_1} |\theta_{1k} - \theta'_{1k}| < \varepsilon, \quad \min_{\theta_{2k} \in \Theta_2} |\theta_{2k} - \theta'_{2k}| < \varepsilon$$

where $\theta_{1k} = \cos^{-1}(\frac{\overrightarrow{\mathbf{v}_1 \cdot \mathbf{v}_2} \cdot \overrightarrow{\mathbf{v}_1 \cdot \mathbf{v}_{1k}}}{\|\mathbf{v}_1 \cdot \mathbf{v}_2\| \|\mathbf{v}_1 \cdot \mathbf{v}_{1k}\|})$, $\theta_{2k} = \cos^{-1}(\frac{\overrightarrow{\mathbf{v}_1 \cdot \mathbf{v}_2} \cdot \overrightarrow{\mathbf{v}_2 \cdot \mathbf{v}_{2k}}}{\|\mathbf{v}_1 \cdot \mathbf{v}_2\| \|\mathbf{v}_2 \cdot \mathbf{v}_{2k}\|})$ and $\mathbf{v}_{1k} \in C(\mathbf{v}_1), \mathbf{v}_{2k} \in C(\mathbf{v}_2)$.

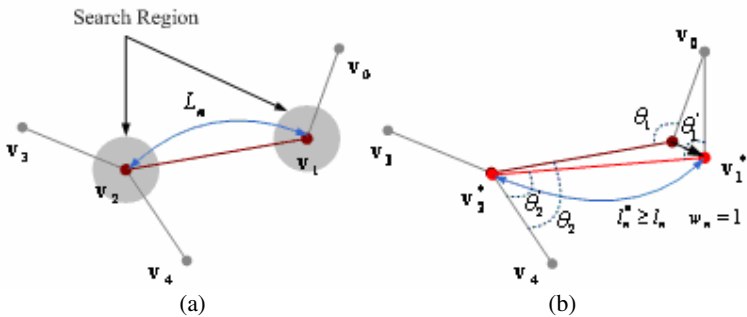


Fig. 3. (a) An embedding primitive in Line components and (b) embedding the watermark into an embedding primitive

2.1.2 Arc Component

An Arc component consists of two points $\mathbf{v}_0, \mathbf{v}_1$, a circle center point C , a circle radius R , a standard point of angle P , two angles θ_0, θ_1 between points and P as shown in

Fig. 4 (a). The watermark bit is embedded into a circle radius R in the randomly selected Arc component. If a watermark bit w_n is 0, C is moved forward to $\mathbf{m} = (\mathbf{v}_0 + \mathbf{v}_1)/2$. Otherwise, C is moved backward to \mathbf{m} . C must be moved within the limit region that the differential ratio of the curvature $\Delta\kappa = \kappa - \kappa' = 1/R - 1/R'$ is below ε . R' is the circle radius of Arc with C' which is moved according to the watermark bit.

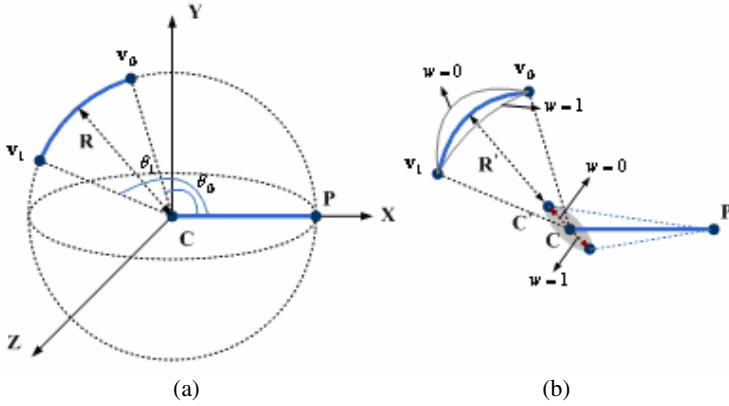


Fig. 4. (a) The structure of an Arc component and (b) the watermark embedding according to the center point C

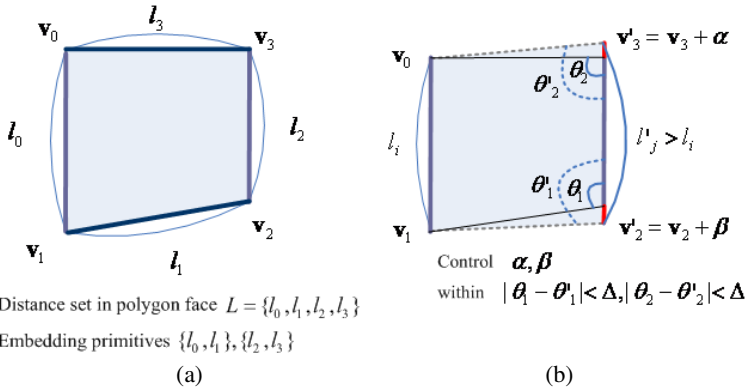


Fig. 5. (a) The structure of 3DFACE component with 4 faces and (b) the embedding using the ratio of two distances when $w = 0$

2.1.3 3DFACE Component

3DFACE represents 3D polygon surface that can be in general use for the surface modeling in 3D CAD drawing. In this paper, 3DFACE components over quadrilateral are used for the watermark embedding. In the randomly selected a 3DFACE component, the set of the distance between two points is obtained; $L = \{l_0, l_1, \dots, l_n\}$,

$l_i = |v_i v_{i+1}|$. An arbitrary distance pair $\{l_i, l_j\}$, $l_i, l_j \in L$, $i < j$, $|l_i - l_j| < \Delta$ without the shared point is randomly selected where $l_i = |v_i v_{i+1}|$ is a reference distance, $l_j = |v_j v_{j+1}|$ is the changeable distance.

The watermark bit w is embedded into the ratio $\alpha = l_i / l_j$ of distance pair; $\alpha \geq 1$ if $w=1$ and $\alpha < 1$ otherwise. To change the distance ratio according to the watermark bit, two points v_j, v_{j+1} in the changeable distance l_j must be changed to be parallel the reference distance l_i within the invisible range as shown in Fig. 4. The invisible ranges of two points are $|\theta_j - \theta'_j| < \Delta$ and $|\theta_{j+1} - \theta'_{j+1}| < \Delta$ respectively. θ_{j+k} and θ'_{j+k} are the angles of two lines with the original intersection point, v_{j+k} , or the changed point v'_{j+k} , $k = 0, 1$; $\theta_{j+k} = \cos^{-1}(\frac{\overrightarrow{v_{j+k} v_{j+k+1}} \cdot \overrightarrow{v_{j+k} v_{j+k-1}}}{\|v_{j+k} v_{j+k-1}\| \|v_{j+k} v_{j+k+1}\|})$.

2.3 Watermark Extracting

The watermark is extracted from the watermarked drawing using two points of the embedded Line component, a circle radius of the embedded Arc component, and the embedding primitive of the embedded 3DFACE component on the same as the embedding algorithm. But to extract the watermark in the watermarked drawing scaled to an arbitrary factor, the re-scaling process is performed by using $\bar{l}^*, \bar{R}^*, \bar{A}^*$, which are an average length, circle radius, area of all the embedded Line, Arc, 3DFACE. All components are re-scaled to dilated or shrunk until all ratios \bar{l}^* / \bar{l}' , \bar{R}^* / \bar{R}' , \bar{A}^* / \bar{A}' are 1. $\bar{l}', \bar{R}', \bar{A}'$ are an average length, circle radius, area of Line, Arc, 3DFACE in the attacked drawing. It takes long time to re-scale closely to original scale factor.

3 Experimental Results

To evaluate the performance of the proposed watermarking, we used 3D CAD drawings designed by AutoCAD 2002 software; Campus, Watch, and Office drawings as shown in Fig. 6. The watermark was used as bit stream generated by a Gaussian random sequence. The length of watermark can be determined by the component distribution of the 3D CAD drawing. There are a number of Line components in Campus1 drawing, Arc components in Watch drawing, 3DFACE components in Campus2, and Line, 3DFACE components in Office as shown in Fig. 6. Among these components in each drawing, we selected 500 components for the embedding primitives. The 3D CAD drawings that are watermarked by the proposed algorithm are shown in Fig. 7. In this figure, a subjective evaluation was used to verify that the watermark was invisible. For the objective evaluation for visibility, we used SNR of each embedding components, which are SNR of points in Line, 3DFACE and radius in Arc. The SNR is defined as

$$SNR = 10 \log_{10} \frac{\text{var}(\|v - M\|)}{\text{var}(\|v - v'\|)} \tag{1}$$

where $\text{var}(\mathbf{v})$ is a variance of random variable \mathbf{v} and \mathbf{M} is the center points in each components. Table 1 shows that SNRs of the watermarked drawings are about 39.89-42.50dB according to the number of components. These values verify the good quality.

To evaluate the robustness, the watermarked drawings were attacked by file format conversion, RST (translation, scaling, rotation), cropping, and layer cutting, compare with Jang's algorithm [7]. Since Jang's algorithm can apply to 2D CAD using Line

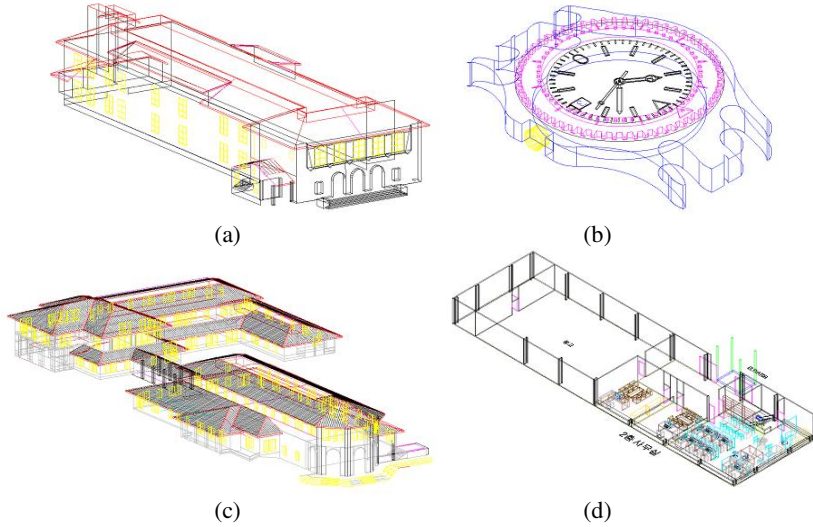


Fig. 6. 3D CAD drawings in AutoCAD; (a) Campus1, (b) Watch, (c) Campus2, and (d) Office

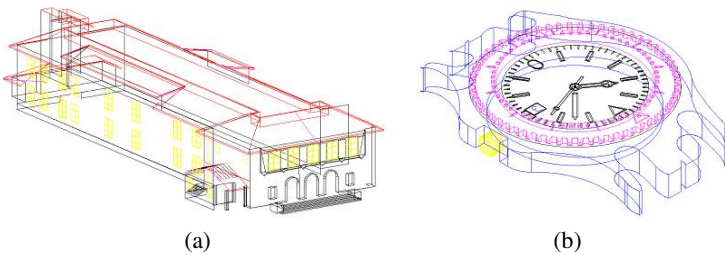


Fig. 7. The watermarked (a) Campus1 and (b) Watch drawings

Table 1. SNR of the watermarked 3D CAD drawings

Test drawing	Campus	Watch	Campus	Floor
Embedding component (Number)	Line (1,130)	Arc (1,770)	3DFACE (551)	Line(8,738) 3DFACE (3,927)
SNR	40.12dB	41.05dB	39.89dB	42.50dB, 41.33dB

and Arc components, our experiment extends to 3D component and embeds the binary watermark for according to the condition of the proposed algorithm. In file format conversion, the watermarked drawings were converted to DXF, DWG, DWT, and DWS by using AutoCAD. But, the watermark can be extracted without bit error in any file format. For geometrical attacks, the watermarked drawings were translated to arbitrary point, dilated or shrunk to arbitrary scaling factor, rotated to arbitrary

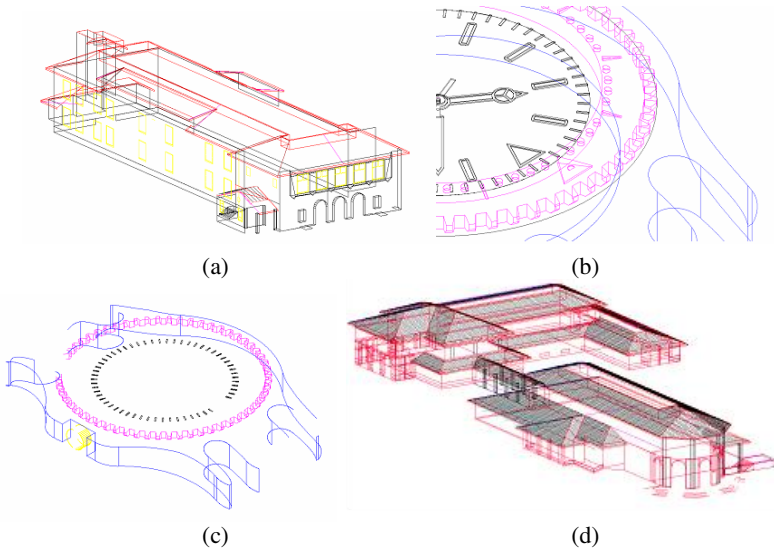


Fig. 8. (a) A cropped Campus1 to 30% of Line components, (b) a scaled Watch to 3 times, and (c) Watch, (d) Campus2 with layer cutting

Table 2. BER of the extracted watermark

Test drawing	Attack	Jang	Proposed
Campus1 (Line)	Format Conversion (DXF,DWG,DWT,DWS)	-	-
	RST	0.10	-
	30% cropping	0.37	0.13
	Layer cutting	0.30	0.24
Watch (Arc)	Format Conversion (DXF,DWG,DWT,DWS)	-	-
	RST	-	-
	30% cropping	0.29	0.08
	Layer cutting	0.23	0.15
Campus2 (3DFACE)	Format Conversion (DXF,DWG,DWT,DWS)	x	-
	RST	x	-
	30% cropping	x	0.22
	Layer cutting	x	0.28
Floor (Line, 3DFACE)	Format Conversion (DXF,DWG,DWT,DWS)	-	-
	RST	0.08	-
	30% cropping	0.27	0.03
	Layer cutting	0.21	0.07

angle, and cropped to 30% of the embedding components. Since the proposed algorithm embeds the watermark into the length in Line, the radius of curvature in Arc, and the length ratio of two sides in 3DFACE, it has not effect on translation and rotation. In scaled drawing, the watermark has to be extracted after performing re-scaling process. But the conventional algorithm has about 10% bit error in Line component. Table 2 verifies that all watermark bits can be extracted without bit error. But in cropping, BER (bit error rate) is less about 0.18 than the conventional algorithm according to the cropping percentage of components. Furthermore, we cut an arbitrary layer in the watermarked drawings that similar as the cropping of all components in a layer. In this case, the bit error occurred less about 0.06-0.14 than the conventional algorithm, which effects on the number of the embedding components in a layer. Since Floor drawings were embedded the watermark into two components, BER is an average of BERs in two components. The above results verified that the watermark still alive above 78% in any attacks. BER represents the bit error rate of the extracted watermark.

4 Conclusions

This paper presented a watermarking for 3D CAD drawings using Line, Arc, and 3DFACE components. The embedding components can be selected randomly or by the component distribution in drawing. The watermark is embedded into the length in Line component, the radius of curvature in Arc, and the length ratio of two sides in 3DFACE. Experimental results verified that the proposed watermarking has the robustness against Format conversion, RST, cropping, and layer cutting as well as the invisibility in a view of component SNR.

Acknowledgement

This work was supported by Korea Research Foundation Grant (KRF-2004-002-D00289).

References

1. I.J.Cox, J.Kilian, T.Leighton, T.Shamoon (1995) Secure Spread Spectrum Watermarking for Multimedia, NEC Research Institute Tech Rep.: 95-10
2. C. Podilchuk, W.Zeng (1998) Image Adaptive Watermarking Using Visual Models, IEEE Journal on Selected Areas in Communication: Vol. 16, No. 4. 525-539
3. R. Ohbuchi, H. Masuda, M. Aono (1998) Watermarking Three-Dimensional Polygonal Models Through Geometric and Topological Modification, IEEE JSAC: 551-560
4. X. Mao, M. Shiba, A. Imamiya (2001) Watermarking 3D Geometric Models Through Triangle Subdivision, Proc. of Security and Watermarking of Multimedia Contents III, IS&T/SPIES's Electronic Imaging : 253-260
5. O. Benedens (1999) Geometry-Based Watermarking of 3D Models, IEEE CG&A: 46-55
6. S. Kanai, H. Date, T. Kishinami (1998) Digital Watermarking for 3D Polygons using Multiresolution Wavelet Decomposition, Proc. Sixth IFIP WG 5.2 GEO-6: 296-307
7. Bong-Ju Jang, Ki-Ryong Kwon, Kwang-Seok Moon, Young Huh (2003) A New Digital Watermarking for Architectural Design Drawing Using LINES and ARCS Based on Vertex, IWDW2003: 565-579