



Correction to: Daily gridded temperature and precipitation datasets over the Black Sea catchment: 1961–1990 and climate change scenarios for 2071–2100

Ana Gago-Silva¹  · Anthony Lehmann^{1,2} · Stéphane Goyette^{3,4}

Published online: 17 July 2020

© Springer-Verlag GmbH Austria, part of Springer Nature 2020

Correction to: Theoretical and Applied Climatology

<https://doi.org/10.1007/s00704-020-03147-x>

The original version of this article unfortunately contained mistakes. The original version of this article contains a typographical error in Data. Figures 10, 14, 17 and 19 were incorrect. The corrected figures are given below.

The authors apologize for any inconvenience caused.

The original article has been corrected.

Publisher's note Springer Nature remains neutral with regard to jurisdictional claims in published maps and institutional affiliations.

The online version of the original article can be found at <https://doi.org/10.1007/s00704-020-03147-x>

✉ Ana Gago-Silva
anagagodasilva@gmail.com

¹ Institute for Environmental Sciences, enviroSPACE Laboratory, University of Geneva, Bd. Carl-Vogt 66, Geneva, Switzerland

² Department F.-A. Forel of Environmental and Aquatic Sciences, University of Geneva, Bd. Carl-Vogt 66, Geneva, Switzerland

³ Institute for Environmental Sciences, Nonlinearity and Climate Group, University of Geneva, Bd. Carl-Vogt 66, Geneva, Switzerland

⁴ Group of Applied Physics, University of Geneva, 22 Chemin de Pinchat, Geneva, Switzerland

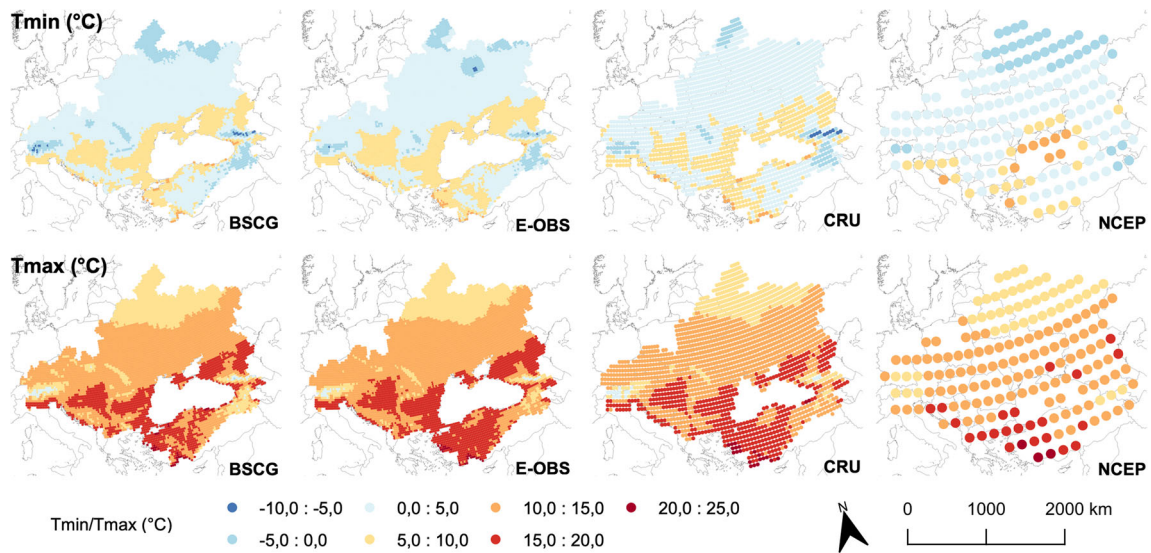


Fig. 10 Average Tmin and Tmax for the historic period (1961–1990), for the BSC grid dataset, the CRU and NCEP datasets

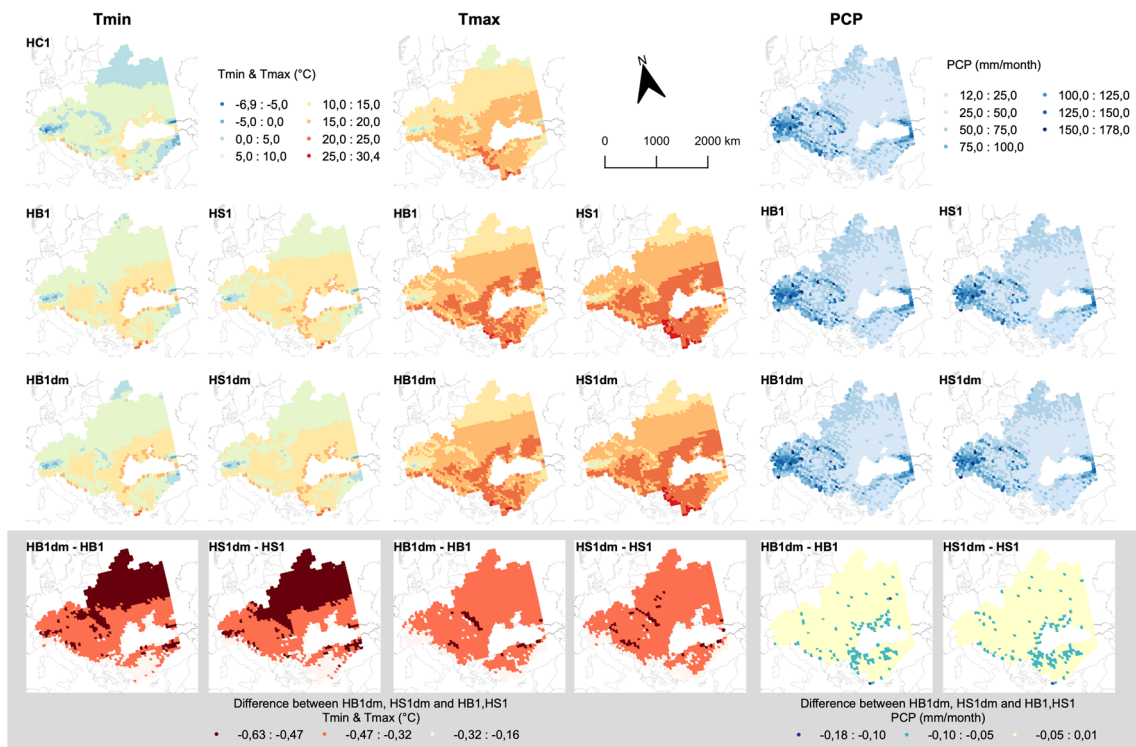


Fig. 14 PRUDENCE HIRHAM mean Tmin, Tmax, and cumulative PCP for the BSC for the control period (HC1), each climate emission scenario during 2071–2100 (HB and HS1) and modelled climate emission

scenario with the DM (HB and HS1). The bottom maps show the differences between the reference HB1 and HS1 and the results obtained with the DM (HB1dm and HS1dm)

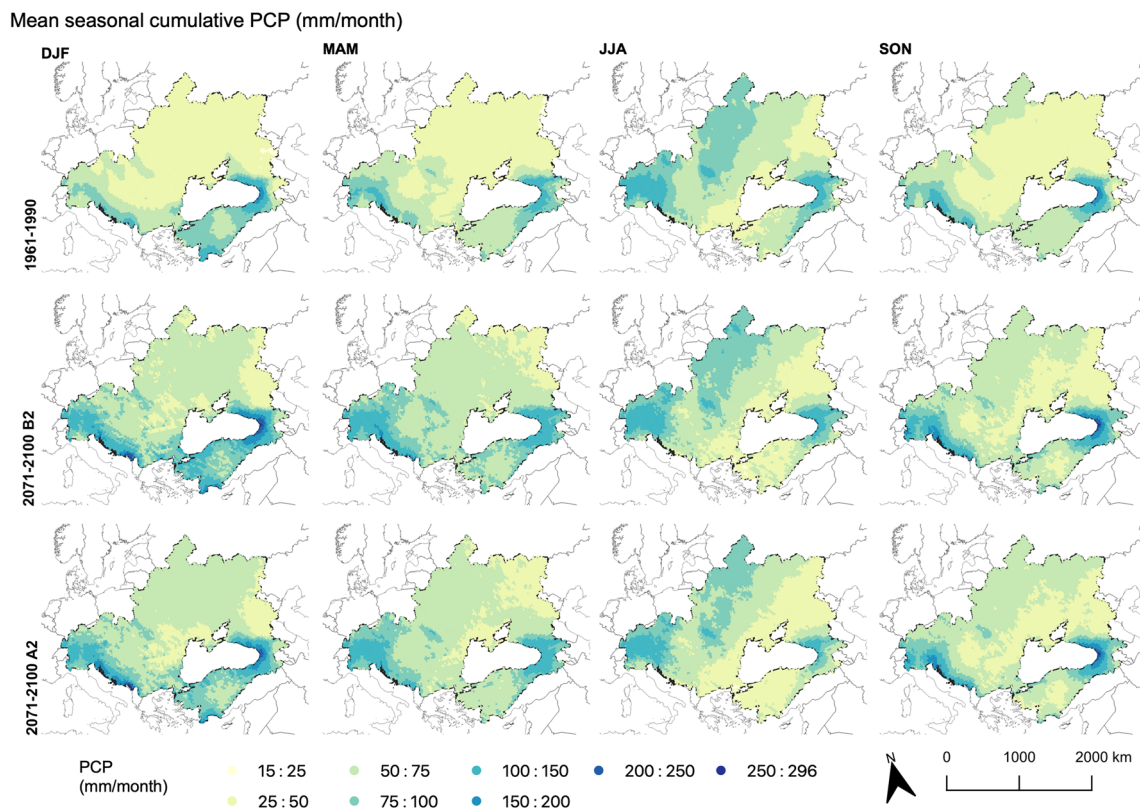
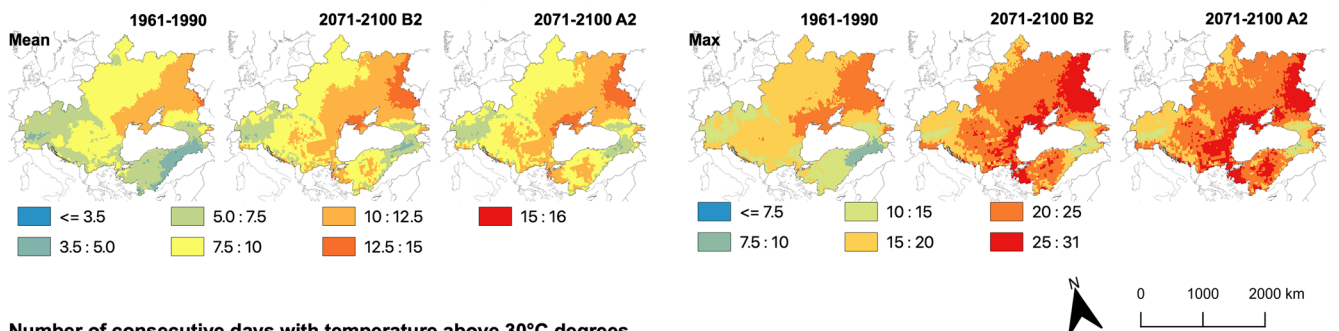


Fig. 17 Seasonal mean cumulative PCP for the historic period (1971–1990) and downscaled scenarios (B2 and A2) for 2071–2100; see Fig. 6 for season symbols

Number of consecutive days with no precipitation (< 1mm/day)



Number of consecutive days with temperature above 30°C degrees

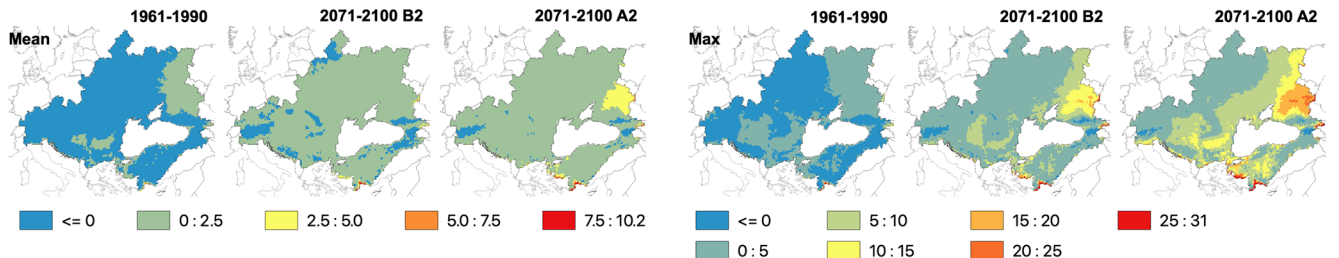


Fig. 19 BSC mean and maximum dry spell duration (top) and heat wave duration (bottom) for the historic period (1971–1990) and both scenarios (B2 and A2) for 2071–2100. The dry spell represents the length of

consecutive number of days within 1 month with PCP below 1 mm/day. The heat wave duration represents the number of consecutive days within one month with temperature above 30°C