

Erratum to: Predictive value of serum HER2 ECD in patients with HER2-positive advanced gastric cancer treated with trastuzumab plus chemotherapy

Jun Zhou¹ · Zhi Peng¹ · Yi Liu² · Jifang Gong¹ · Xiaotian Zhang¹ · Ming Lu¹ · Jing Gao¹ · Yili Li¹ · Yanyan Li¹ · Lin Shen¹

Published online: 8 March 2016
© Japanese Society of Gastroenterology 2016

Erratum to: J Gastroenterol (2015) 50:955–961
DOI 10.1007/s00535-015-1046-3

In Table 2, clerical mistakes of the number of patients in low or high than 15.0 ng/ml were made. The number of patients with low than 15.0 ng/ml should be 40, and high should be 25. Table 2 should be shown as follows.

The original version of this article unfortunately contained error in Fig. 4a, the correct Fig. 4a is shown as follows.

The online version of the original article can be found under doi:[10.1007/s00535-015-1046-3](https://doi.org/10.1007/s00535-015-1046-3).

✉ Zhi Peng
zhipeng3@hotmail.com

Lin Shen
lin100@medmail.com.cn

¹ Department of Gastrointestinal Oncology, Key Laboratory of Carcinogenesis and Translational Research (Ministry of Education), Peking University Cancer Hospital and Institute, FuCheng Road 52, HaiDian District, Beijing 100142, China

² Translational Medicine Center, Laboratory of Oncology, Affiliated Hospital of Academy of Military Medical Sciences, Beijing, China

Table 2 Correlation between basic HER2 ECD status response rates for AGC patients treated with trastuzumab

Parameter	Baseline serum HER2 ECD			
	Low (<i>n</i> = 40) (<15.0 ng/ml)	High (<i>n</i> = 25) (\geq 15.0 ng/ml)	Low (<i>n</i> = 18) (<10.65 ng/ml)	High (<i>n</i> = 47) (\geq 10.65 ng/ml)
Respond rate	50.00	80.00	28.57	72.34
95 % CI	37.45–62.54	69.96–90.04	17.23–39.91	61.13–83.55
Odds ratio	4.000		6.538	
95 % CI	1.232–12.898		1.740–24.574	
<i>P</i> value	0.017		0.003	

CI confidence index

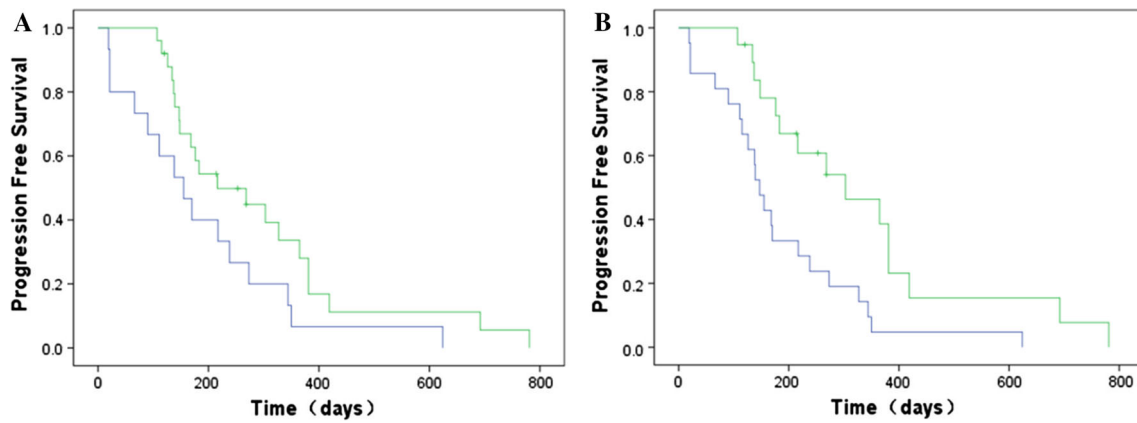


Fig. 4 Kaplan–Meier analysis of progression-free survival in patients with changes of serum HER2 ECD. **a** Serum HER2 ECD decline or not; **b** serum HER2 ECD decline \geq 20 % or not