

## Erratum to: Value of $^{18}\text{F}$ -FDG uptake on PET/CT and CEA level to predict epidermal growth factor receptor mutations in pulmonary adenocarcinoma

Kai-Hsiung Ko · Hsian-He Hsu · Tsai-Wang Huang · Hong-Wei Gao · Daniel H. Y. Shen · Wei-Chou Chang · Yi-Chih Hsu · Tsun-Hou Chang · Chi-Ming Chu · Ching-Liang Ho · Hung Chang

Published online: 8 July 2014  
© Springer-Verlag Berlin Heidelberg 2014

**Erratum to: Eur J Nucl Med Mol Imaging**  
**DOI 10.1007/s00259-014-2802-y**

The images of Figs. 1 and 2 were transposed, so that each appeared with the wrong legend. The publisher apologizes for any inconvenience and is pleased to rectify the mistake here.

---

The online version of the original article can be found at <http://dx.doi.org/10.1007/s00259-014-2802-y>.

---

K.-H. Ko · H.-H. Hsu (✉) · W.-C. Chang · Y.-C. Hsu · T.-H. Chang  
Department of Radiology, Tri-Service General Hospital and National Defense Medical Center, 325, Section 2, Cheng-Gong Road Nei-Hu, Taipei 114, Taiwan, Republic of China  
e-mail: hsianhe@yahoo.com.tw

T.-W. Huang · H. Chang  
Department of Thoracic Surgery, Tri-Service General Hospital and National Defense Medical Center, Taipei, Taiwan, Republic of China

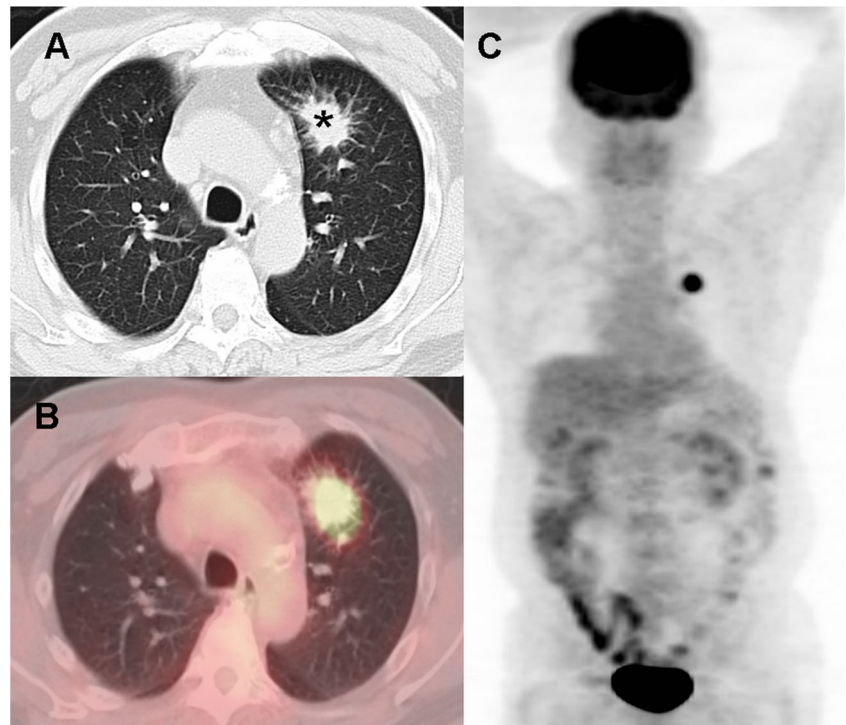
H.-W. Gao  
Department of Pathology, Tri-Service General Hospital and National Defense Medical Center, Taipei, Taiwan, Republic of China

D. H. Y. Shen  
Department of Nuclear medicine, Tri-Service General Hospital and National Defense Medical Center, Taipei, Taiwan, Republic of China

C.-M. Chu  
Section of Health Informatics, Institute of Public Health, National Defense Medical Center and University, Taipei, Taiwan, Republic of China

C.-L. Ho  
Division of Hematology-Oncology, Department of Internal Medicine, Tri-Service General Hospital and National Defense Medical Center, Taipei, Taiwan, Republic of China

**Fig. 1** Representative images of an adenocarcinoma with wild-type EGFR were shown in a 61-year-old man who was a heavy smoker and had a normal serum CEA (2.8 ng/mL). (a) CT scan in lung window setting showing a spiculated tumor (*asterisk*) in the left upper lobe.  $^{18}$ F-FDG PET/CT in the axial plane (b) and the whole-body maximum-intensity-projection (c) images demonstrating abnormal FDG uptake in left upper lobe tumor (SUVmax:9.8)



**Fig. 2** Comparative ROC curves of one factor (SUVmax), two factors (SUVmax and tumor margin), three factors (SUVmax, CEA level and tumor margin) and four factors (SUVmax, CEA level, tumor margin and smoking history) for predicting EGFR mutation

